

Multi-Mentor Model for Simulation Success: Building the First High-Fidelity Medical Simulation Center in Liberia Through International Partnership

Hawa Koon, MD, Isaac Dolo, MPH, George Monibah, Franpatra Goodridge, Arna Banerjee, MD, Anthony Dancel, Jordan Halasz, Mary Mungai, Phyllis Ngure, Ernest M. Kiazolu, Bernice Dahn MD, MPH, Ann Green, MPH, Lila Kerr, MPH, Chelsea Plyler, JD, Marie H. Martin, PhD, MEd

Need

Medical Simulation can be an effective training tool to bridge the gap between the classroom and actual patient care.

Background

- The ELAB aims to advance evidence-based decision-making and practice in patient care.
- The University of Liberia College of Health Sciences (ULCHS) Experiential Learning and Assessment Lab (ELAB) at John F. Kennedy Medical Center, is the first high-fidelity medical simulation center in Liberia.



The ELAB Development Process

The ELAB was established through a multiple-partner collaboration over two years, including in-person training and virtual mentorship

Year One

The team visited the high-fidelity simulation center at Kijabe AIC Hospital in Kenya, where they built skills in scenario writing and implementation and institutional operations.



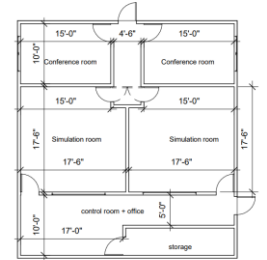
Year Two

- The ELAB team spent 2 weeks at Vanderbilt University's Center for Experiential Learning and Assessment (CELA) for training on topics related to simulation, faculty buy-in, business operations, standardized patients, and revenue generation.
- The ELAB Technician attended Laerdal's Advanced Care and Maintenance Certification course to upkeep the simulation manikins.



The Components of ELAB

- Simulated hospital bays
- High-fidelity training manikins
- Task trainers
- A/V monitoring equipment
- Debriefing rooms which enable realistic and instructive scenarios



Discussion

As of December 2023:

28 Clinical Faculty Engaged

130 Simulations Run

- Building a high-fidelity simulation center requires a committed national team with identified leaders and “simulation champions.”
- Intentional integration of simulation into health sciences curricula can build awareness and support across programs.
- The ELAB established strong mentoring relationships with CELA and Kijabe staff and continue to meet regularly for targeted support.
- This serves as a model of cross-country collaboration to build effective, sustainable and transformative simulation centers like the ELAB.

Funding: USAID Research for a Healthy Liberia (BRIDGE-U Liberia; 7200AA21CA00010)